



NR Series

Online UPS 1~10kVA

- » 3 level Technology
- » Rack and tower design
- » Output PF up to 1.0
- » AC/AC efficiency up to 95.5%
- » Hot-Swappable Battery Design
- » Comformal coating for all PCB
- » Bigger charger addable

High Reliable

- Wide input voltage range for higher grid adaptability
- Full DSP control for top performance
- Anti-corrosion resistant coating for all PCB boards
- Generator compatible ensure the clean power for extend power outage
- EPO function as standard for immediatly remove power from connected load for emergency
- Cold start function which allow UPS start on battery when grid isn't available.

Green Power

- 3 level technology for input power factor up to 0.996, Low THDi (< 4%), decrease pollution to city power
- AC/AC efficiency up to 95.5% and ECO mode up to 98.5%, less TCO and more energy saving
- Output power factor up to 1.0, more powerful to connect more critical loads

Flexible Design

- Rack and tower compact design for internal battery 2U for 1-3kVA, 4U for 6-10kVA
- LCD display software rotate setting to suit for rack and floor installation.
- Hot-swappable internal and external battery design for online battery replacement.
- Frequency converter mode
- 1-8A settable charger for longer back up time.
- Programmable power management outlet (1-3K).

Optional

- Hot-swappable battery cabinet (1-3K)
- 19 inch Rail kit
- 7A additional charger (1-3K)
- SNMP/USB/Dry contact kit
- Battery disconnection alarm
- Charging voltage temperature compensation

Typical Applications:



Telecom



Local Area Networks



E-business



Servers



Cash Registers



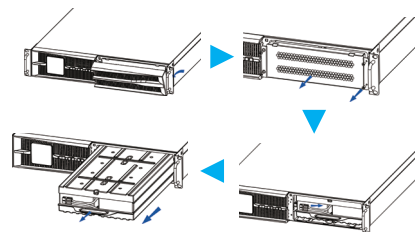
Security



Horizontal Display



Vertical Display



Battery Replacement

Technical Specification

MODEL	NR1000	NR2000	NR3000	NR6000	NR10000
Input					
Voltage (Vac)	120-295			80-275	
Frequency (Hz)	40-70 (50/60Hz auto-sensing)				
Power Factor	≥0.99				
THDi	<4% (full linear load)				
Output					
Capacity(VA)	1000	2000	3000	6000	10000
AC/AC Efficiency Max.	92.5%	93.5%	93.8%	95.5%	95.5%
Power Factor	0.9/1.0				
Voltage (Vac)	208/220/230/240±1% (selectable on display panel)				
Frequency(Hz)	50/60±0.1 (battery mode)				
THDv	THD <2% (linear load), THD < 3% (nonlinear load)			THD <1% (linear load), THD < 4% (nonlinear load)	
Overload*	PF0.9:101~105% load long run,106~110% load 10 mins, 111~130% load 1 min, 131~150% load 1s, above 150% load 200 ms PF1.0:101~105% 1min,106~120% 5s, over 120% 200 ms			101~105% Long run, 106~130% load for 10mins, 131~150% 30s, over 150% 500ms.	
Transfer Time	0				
Current Crest Ratio	3:1				
Battery					
Voltage(Vdc)	36	48	72	192-240	
BATT Type	3×7Ah/12V	4×9Ah/12V	6×9Ah/12V	16×7Ah/12V	16×9Ah/12V
Charging Current (A).	1~8A settable (2~8A when additional charger)			1~8A settable	
Other					
Communication Interface	RS232+EPO (SNMP, USB,RS485+Dry contact are optional in slot)				
Output Outlet	8×IEC320 C13	8×IEC320 C13 + 1×IEC320 C19		Terminal + 2×IEC320 C13	
Display	Blue screen LCD (Software rotate)				
Display Details	AC input & output voltage, frequency, Load level, Battery level, Temperature; AC mode, Battery mode, Bypass mode, and Fault				
Alarm	Low battery, Abnormal AC input, UPS failure, etc.				
Protection	Low battery, overload, short-circuit and over temperature, etc.				
Noise (dB)	< 50			< 55	
Working Temperature*	-5~ 50°C (40~50°C auto derating)				
Relative Humidity	0 ~ 95%, No condensation				
Altitude(m)	1000, no derate.				
Regulatory Approvals	CE, IEC62040-1, IEC62040-2				
UPS (W×D×H)(mm)	438×420×87	438×570×87		438×660×174	
Battery Cabinet (W×D×H)(mm)	438×420×87(2U)	438×570×87 (2U)	438×570×87 (2U)	438×500×130 (3U)/438×680×130 (3U)	
UPS Weight (kg)	14	20	26	55.6	67.2
Battery Cabinet Weight (kg)	20(7AH)	29(9AH)	40(9AH)	45(7AH)/48(9AH)	55(7AH)/60(9AH)

• Specification is subject to change without prior notice.

• * Condition Comply.

Nanoweld BVBA

Add: Kwade Weide 1, B-2920 Kalmthout, Antwerpen, Belgium.
Email: info@javac.be Tel: +32 (0) 3666 4417 www.javac.eu

