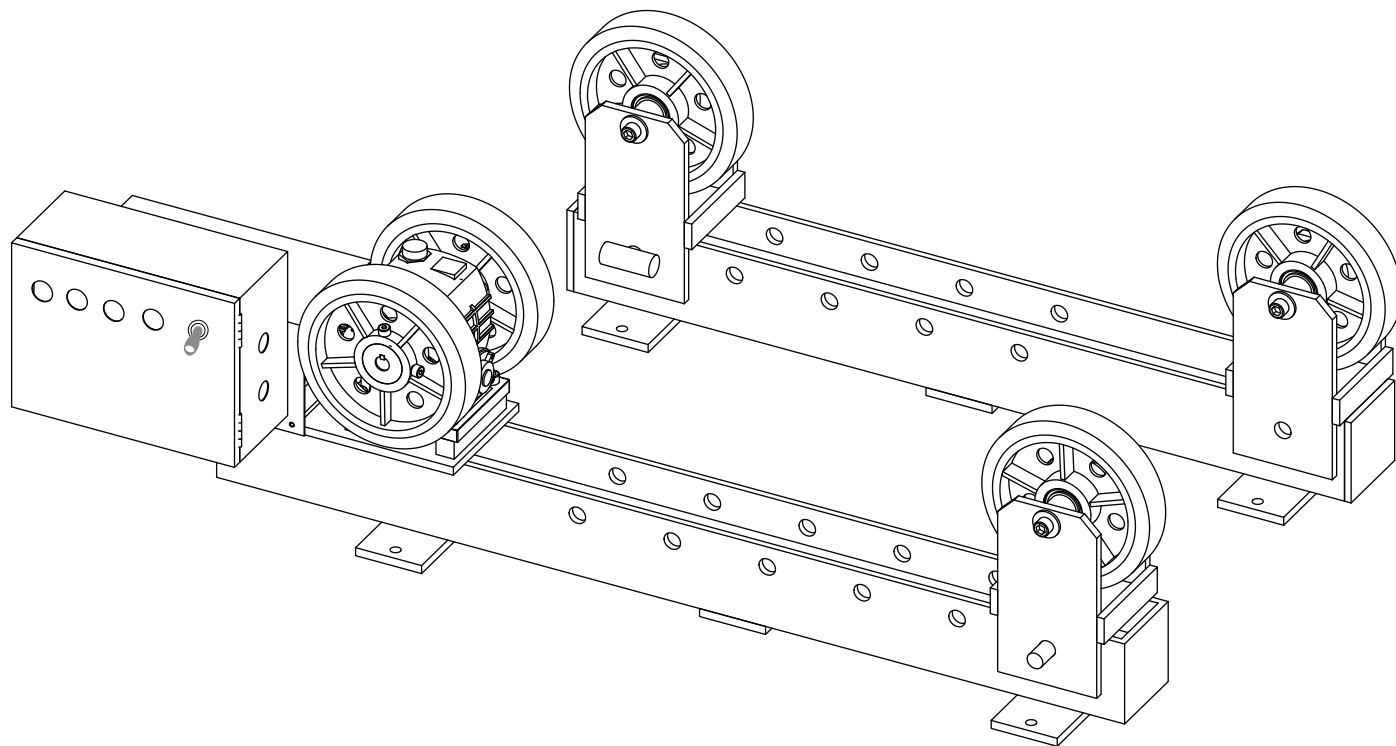
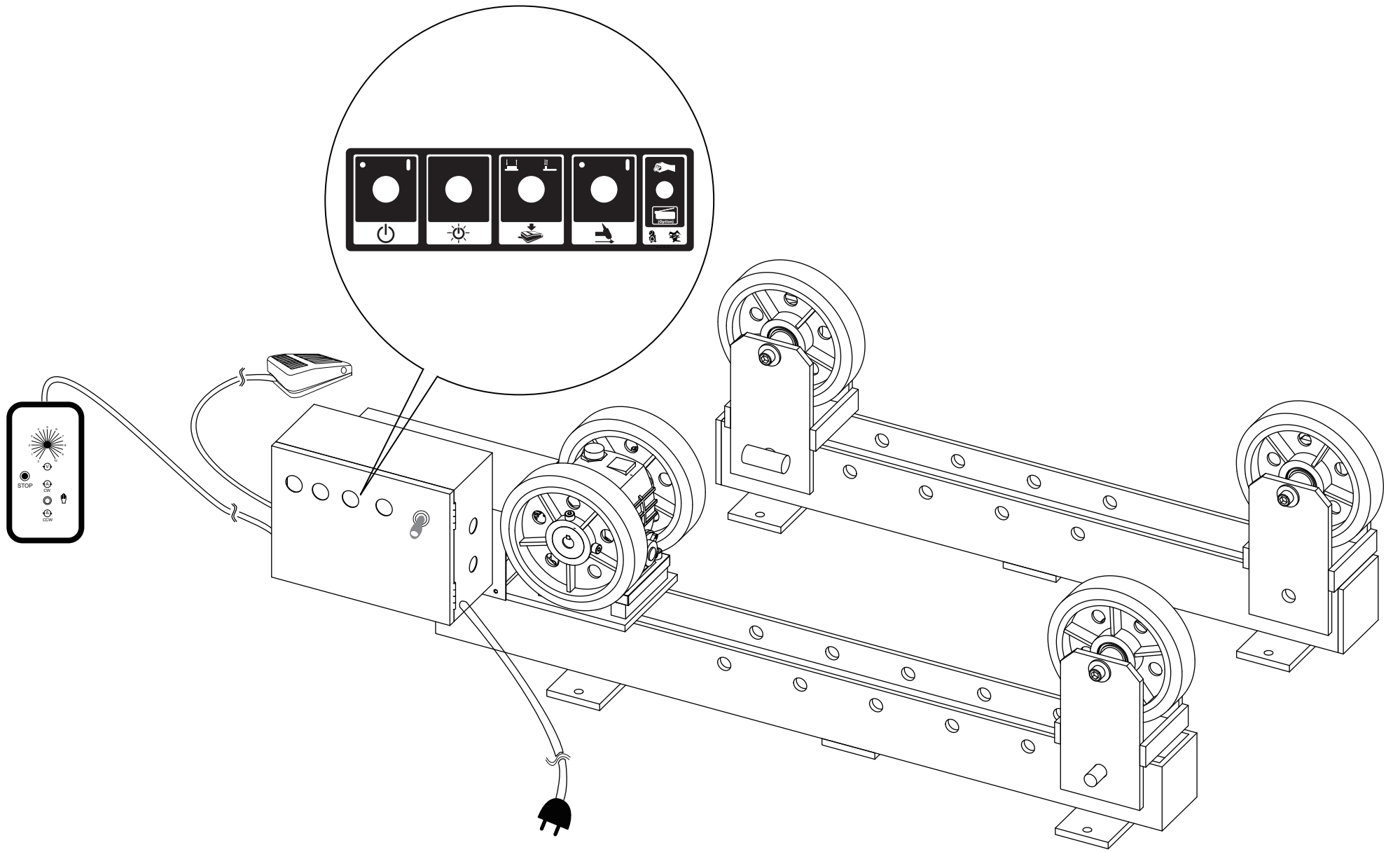


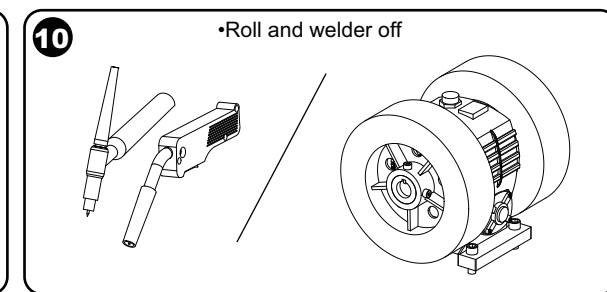
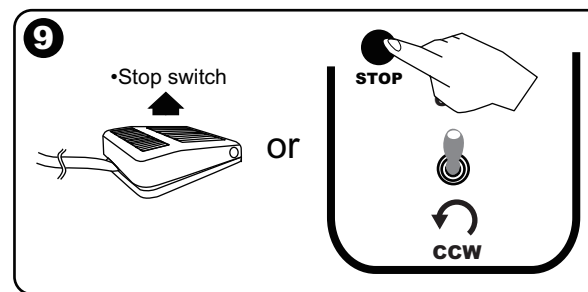
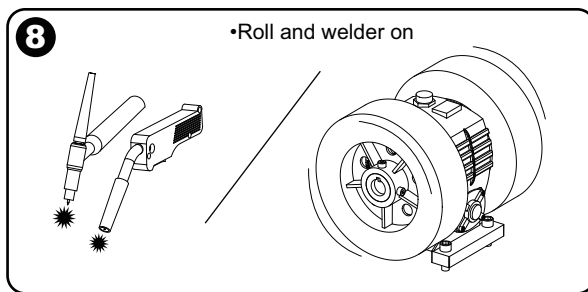
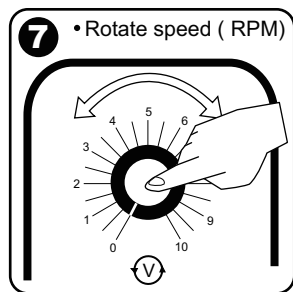
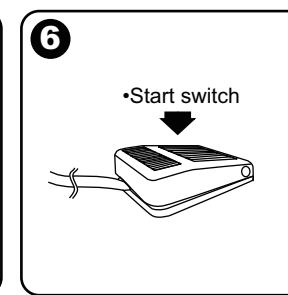
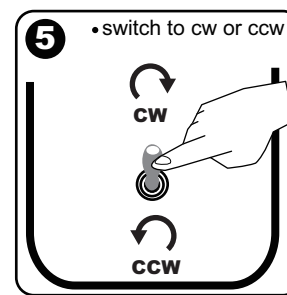
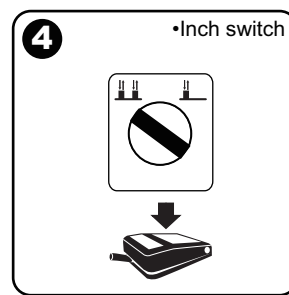
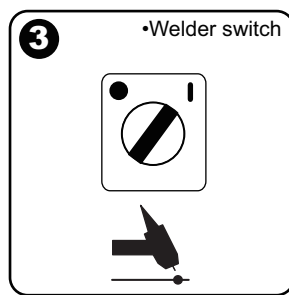
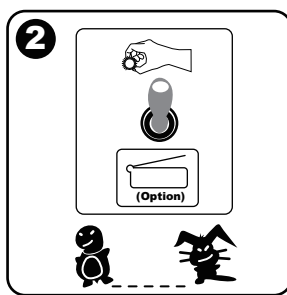
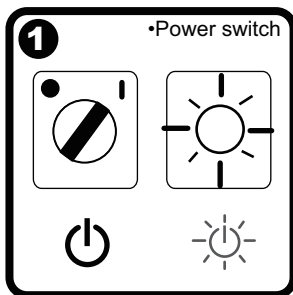
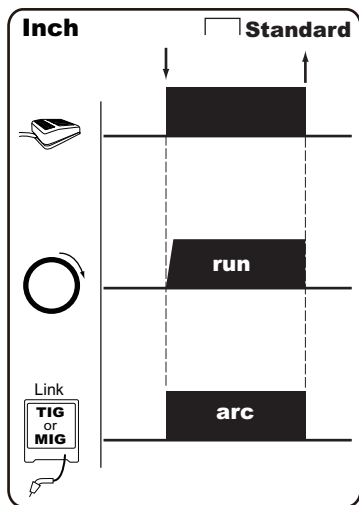
JAVAC

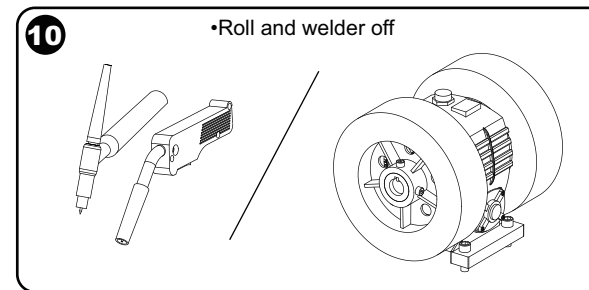
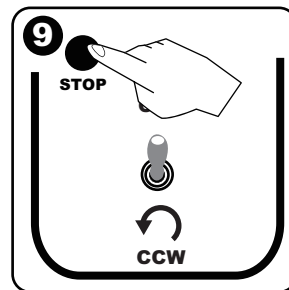
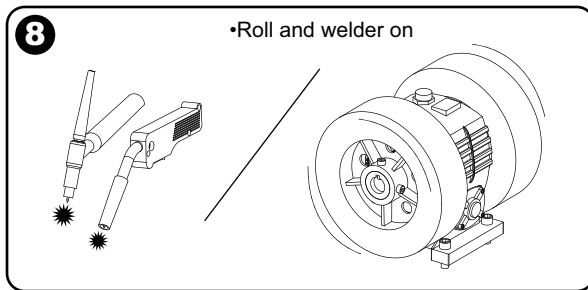
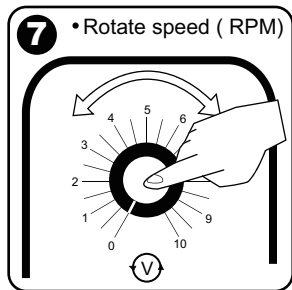
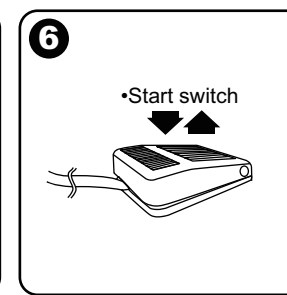
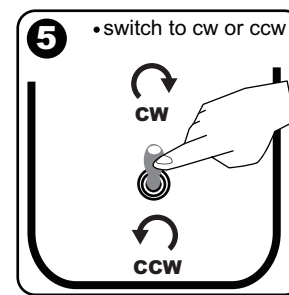
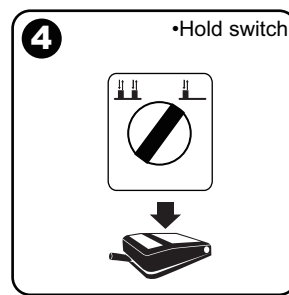
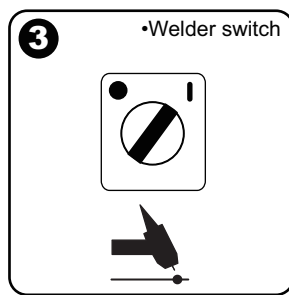
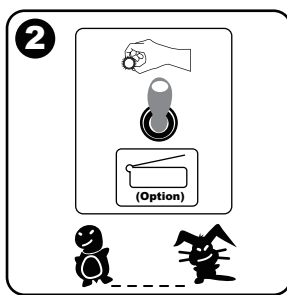
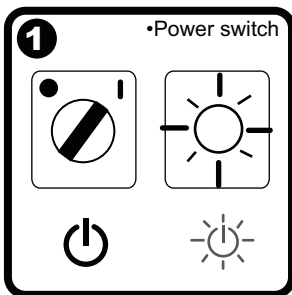
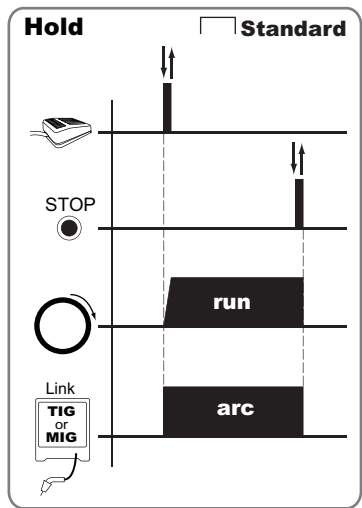
Owner's Operating Manual

**Models
SIR-3T**

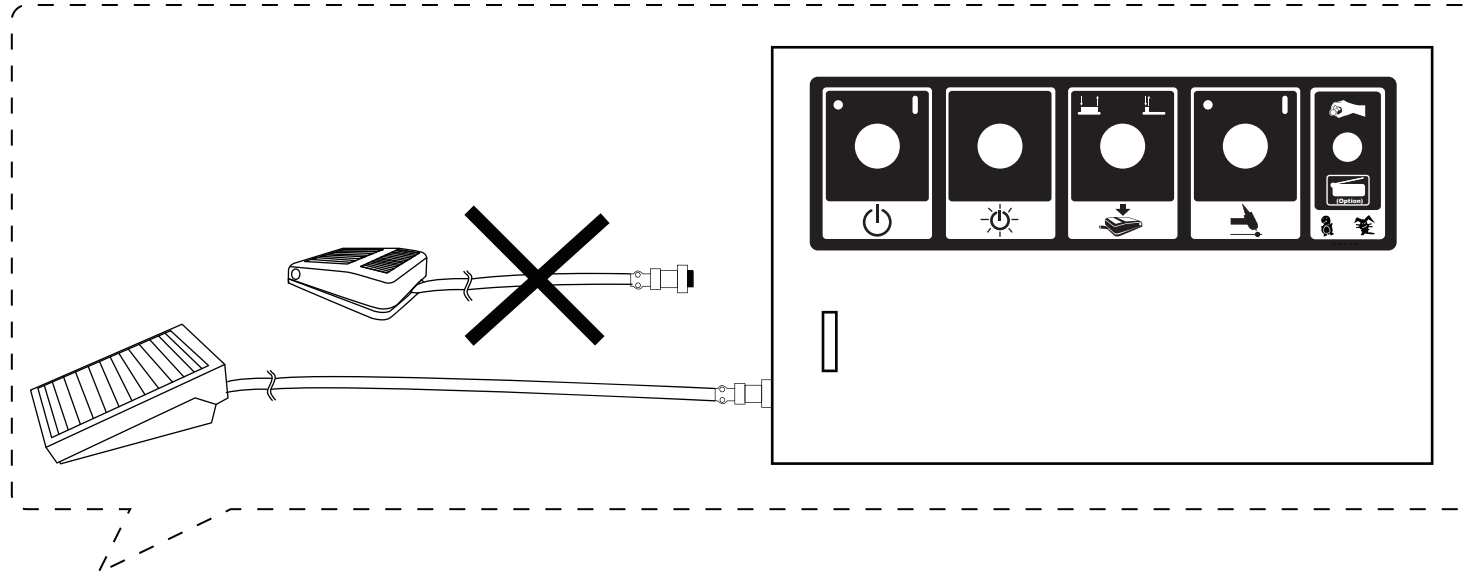
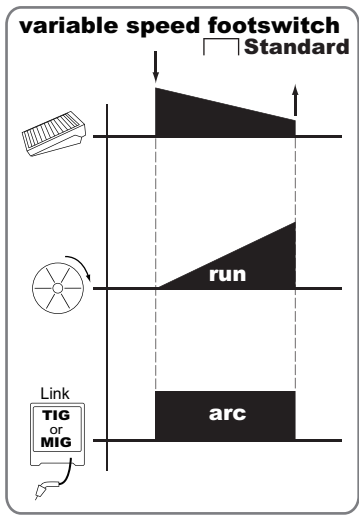








•Adjustable Speed Foot Switch (use the variable speed foot switch) (Option)



1 •Power switch

2

(Option)

3 •Welder switch

4 •Start switch

5 •Roll and welder on

6 •Increase or lower the pressure

↓

↑

Low

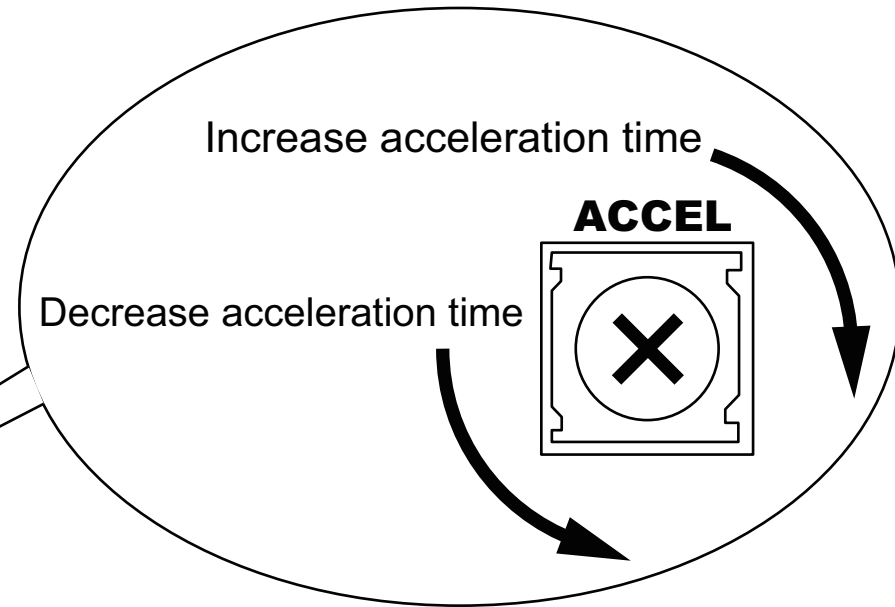
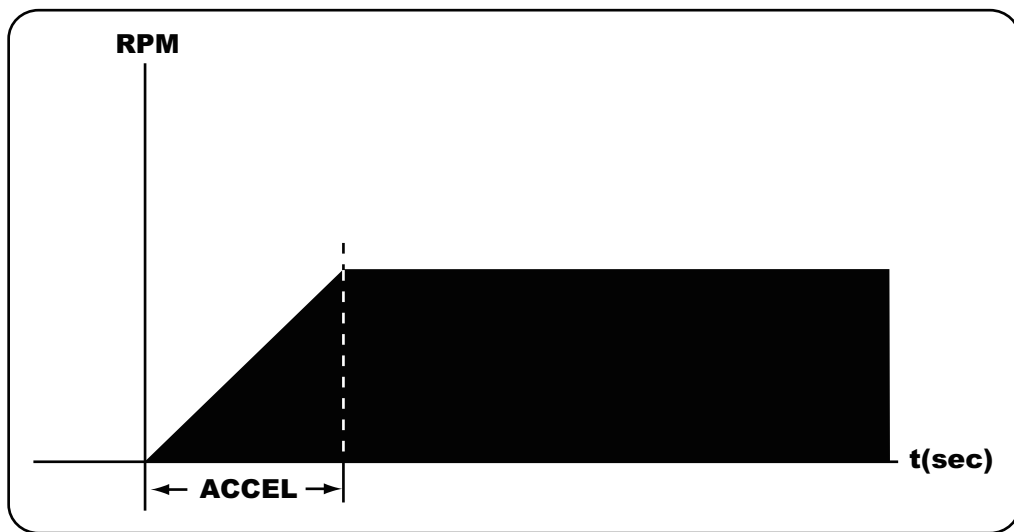
High

•table speed to low or high

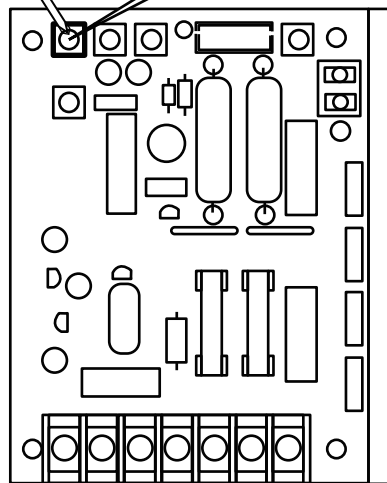
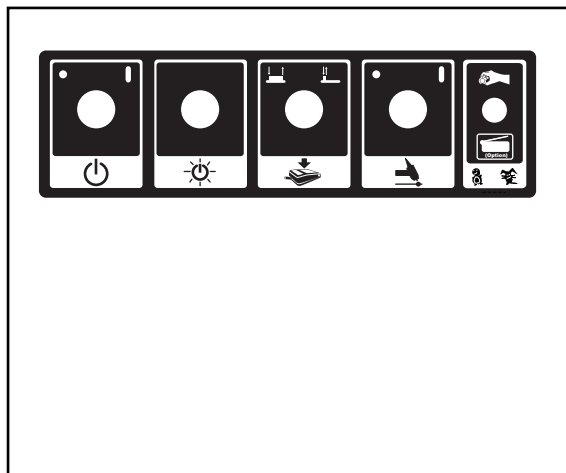
7 •switch off

8 •Table and welder off

•Table start and accelerate time to adjust

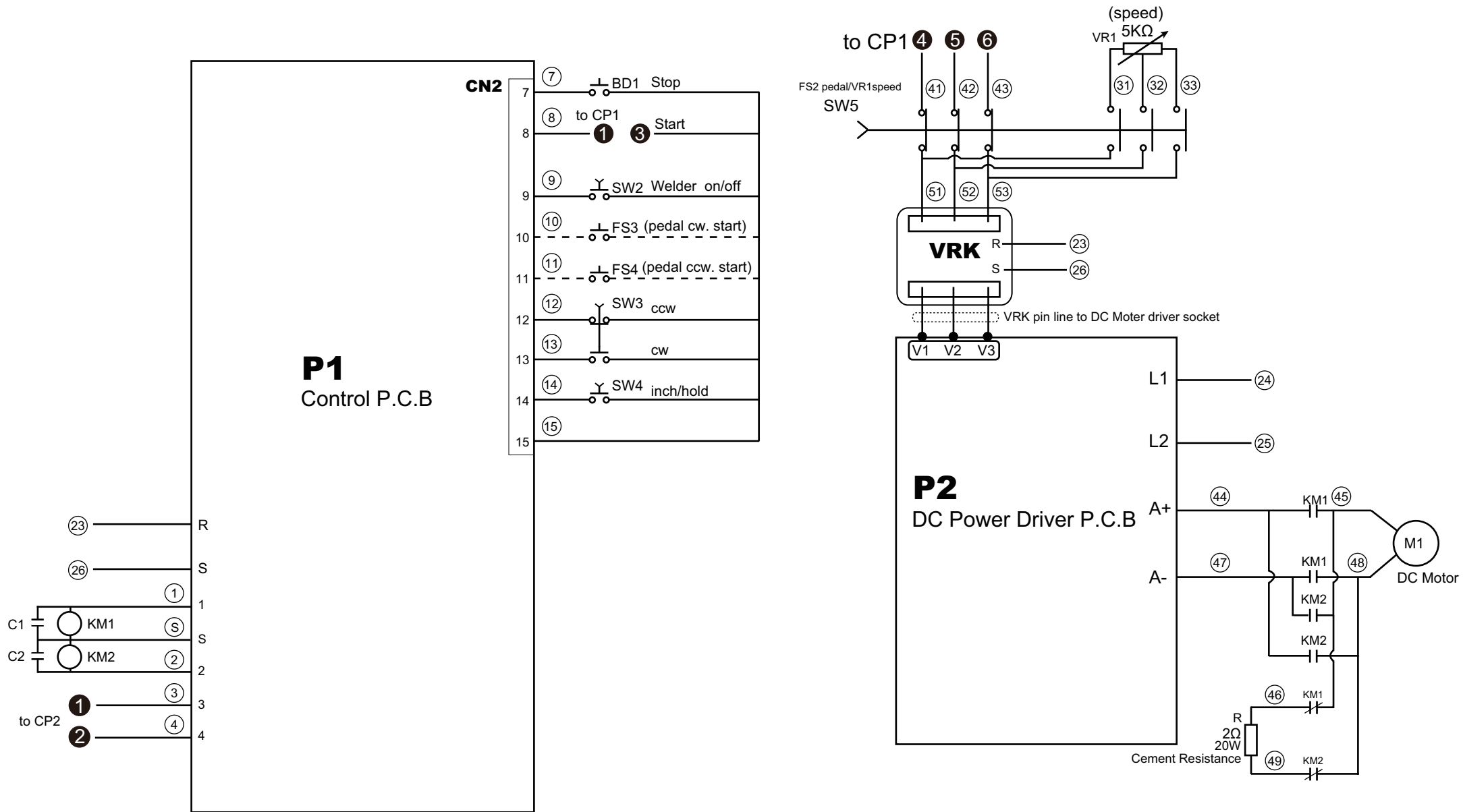


Open the control panel



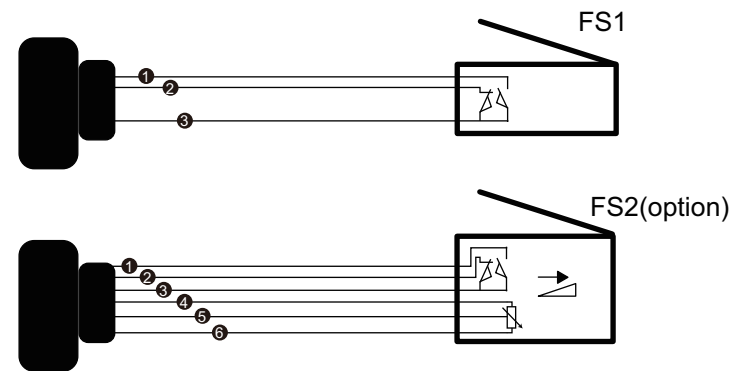
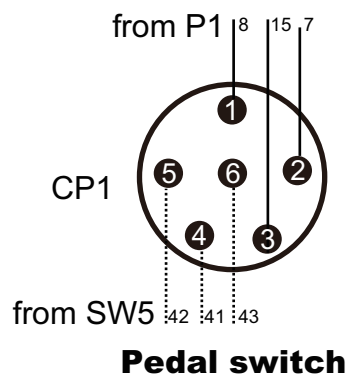
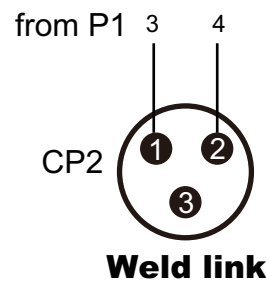
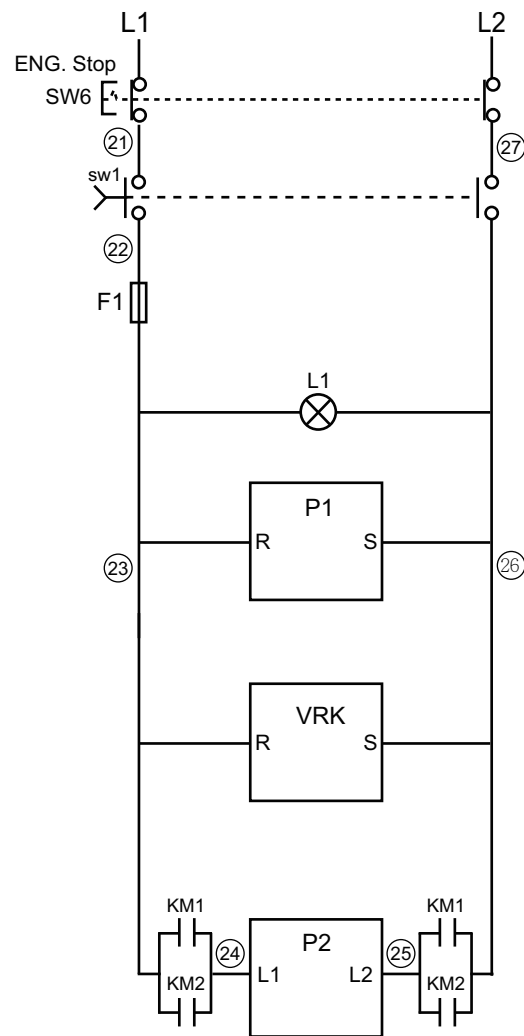
DC motor driver

A.1 SIR-3T ELECTRICAL DIAGRAM



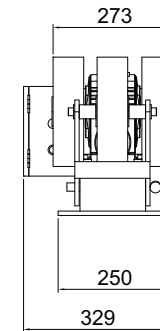
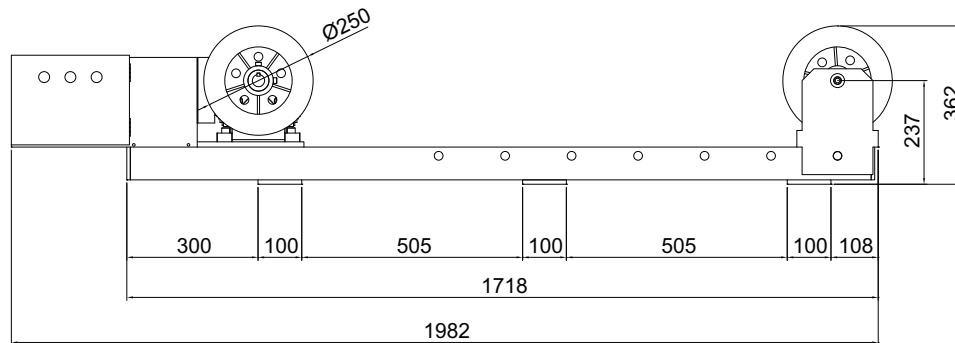
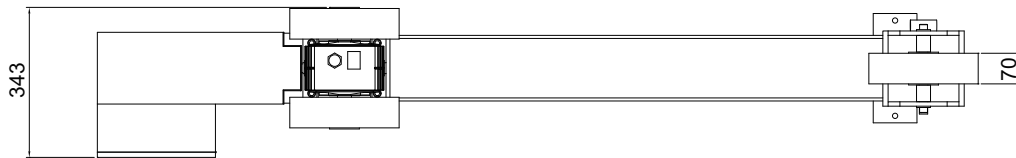
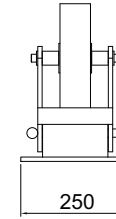
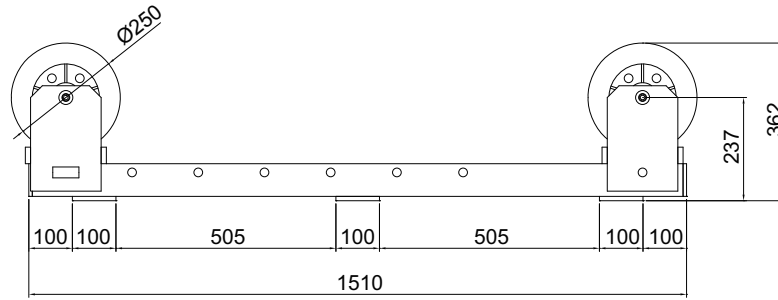
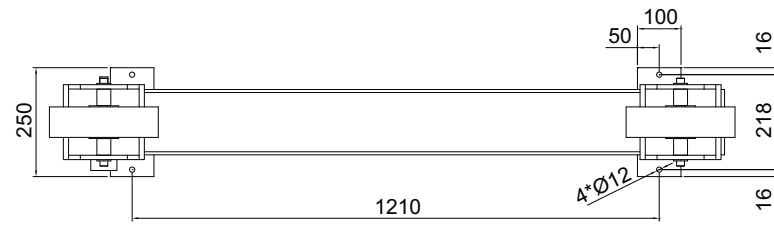
SIR-3T
AC 230V/1Ø

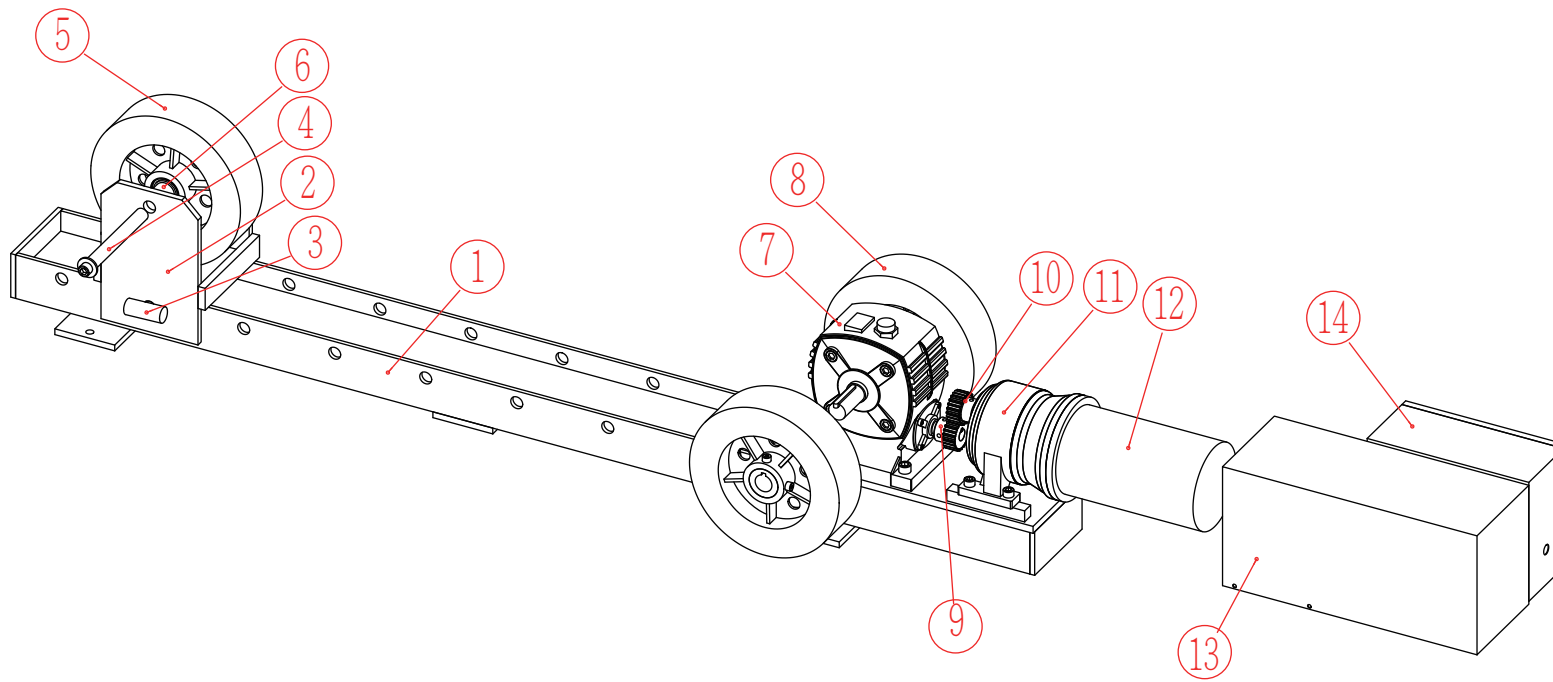
A.2 SIR-3T ELECTRICAL DIAGRAM



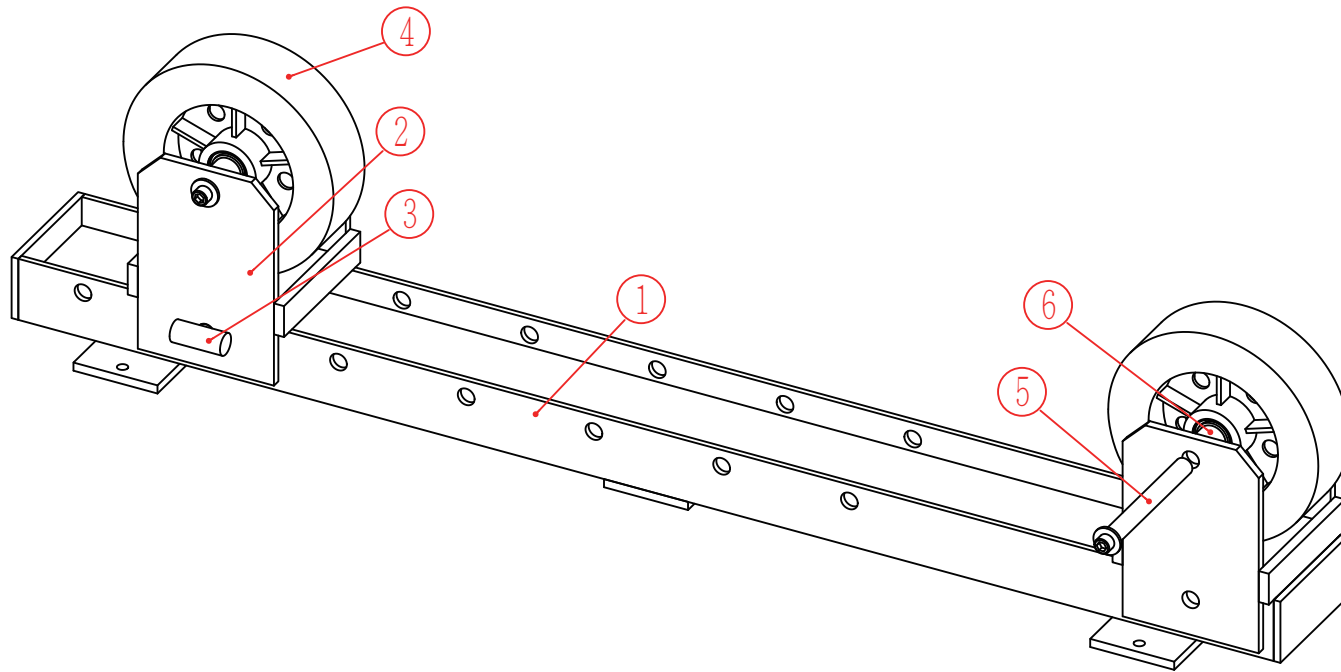
SIR-3T
AC 230V/1Ø

SIR-3T





| Item | Port Name | Port No. | Q`TY |
|------|-------------------|--------------|------|
| 1. | Roller Base | SIR3T01 | 1 |
| 2. | Idle Shelf | SIR3T03 | 1 |
| 3. | Pin | SIR3T10 | 1 |
| 4. | Idle Axis | SIR3T04 | 1 |
| 5. | Idle | SIR3T09 | 1 |
| 6. | Ring | SIR3T05 | 2 |
| 7. | Worm Gear Reducer | LW70V-30B | 1 |
| 8. | Drive | SIR3T08 | 2 |
| 9. | Drive Gear | SIR3T07 | 1 |
| 10. | Drive Gear | SIR3T06 | 1 |
| 11. | Gear Reducer | CHM-200-40 | 1 |
| 12. | DC Motor | PM-V200W180V | 1 |
| 13. | Motor Cover | SIR3T11 | 1 |
| 14. | Box | SIR3TC | 1 |



| Item | Port Name | Port No. | Q'TY |
|------|-------------|----------|------|
| 1. | Roller Base | SIR3T02 | 1 |
| 2. | Idle Shelf | SIR3T03 | 1 |
| 3. | Pin | SIR3T010 | 1 |
| 4. | Idle | SIR3T09 | 2 |
| 5. | Idle Axis | SIR3T04 | 2 |
| 6. | Ring | SIR3T05 | 4 |