

POWER YOUR FUTURE

DEUTZ OEM Generator

80 KVA

Prime Power: 80 KVA

Standby Power: 88 KVA



GENERATING POWER SOLUTIONS

Increased availability for new operations

Reliable, robust and versatile generator.
Ready to deliver power for a next job.

Increased uptime during operations

Once installed on the end-user-site, the generator will be ready to run: "peace of mind" operation.

Reduced transport and installation costs

The compact and robust design with integrated transport features enables faster and safer transport and installation.

Reduced service & maintenance costs

Longer service intervals.
Quicker and more efficient service jobs.

Premium resale value

Designed and built to last.



 SAFETY
<ul style="list-style-type: none"> ● Operate safely in accordance with proper operation manual. ● To prevent trouble and accidents, perform daily and preventive maintenance checks without fail.

DEUTZ Series

10KVA--325KVA

Technical Data

Model		SL-80
Rated prime power	kva	80 KVA
Rated standard power	kva	88 KVA
Rated voltage line to line	V	400/230
Rated current	A	115
Maximun sound level	dB(@7m)	≤76

Engine		
Model		SL4,1D80E201
Air intake system		Turbocharged
Fuel injection system		Direct Inject
No. cylinders		4
Displacement	Liquid	4,087
Bore*Stroke	mm	105*118
Compression ratio		17,5
Rated speed	r/min	1500
Rated net power(with fan)	Kw	72
Governor type		electronic
Start Motor	V	24

Alternator		
Model	javac	60 kw
Phase		3
Voltage	V	400/230
Wiring Type		3 Phase 4 wire, Y type
Bearing		1
Power factor		0,8
Frequency	Hz	50
Prime power	KVA	85
Exciter Type		Brushless, self-excitation
Voltage regulation	%	±0.5
Protection Grade		IP 23
Insulation grade		H/H
Altitude	m	≤1000

Controller-DEEPSEA	
Model	DSE6120
Protective functions:	<ul style="list-style-type: none"> ■ Low oil pressure

Exhaust System

Exhaust gas flow	m³/min	/
Exhaust gas temp	°C	/
Max back pressure	kPa	10

Air Intake System

Max intake restriction	kPa	/
Consumption	m³/min	/
Air flow	m³/min	/

Fuel System

100% load(Prime power)	L/h	8,3
75% load(Prime power)	L/h	5,9
50% load(Prime power)	L/h	4,3
Fuel tank capacity	L	140

Lubrication System

Total system oil capacity	L	13
Oil consumption	g/kwh	≤3
Min oil pressure	MPa	0.3-0.5

(continuous operation)

Cooling System

Total coolant capacity	L	28
Thermostat	°C	85-92
Max top tank temperature	°C	104

Standard Features

- Radiator 50°C max,fans are driven by belt ●
- 24V charge alternator ●
- Alternator: single bearing alternator IP23,

- High water temperature
- High/low voltage
- High Engine Temperature and Overspeed.
- Voltage regulator frequency regulator
- Emergency stop
- Start failure

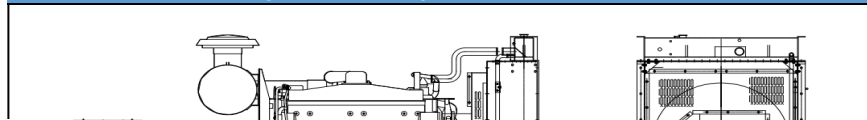


Control Module Options



- Auto generator control module
- Control module with" Three Remote Control" functions
- ATS auto load transfer screen
- Synchronising control modules
- Power output cabinet

Unit Dimensions(Basic unit)



- insulation class H/H
- Standard auto control system
- One set of air filter, fuel filter, oil filter
- Main line circuit breaker/MCCB
- Base fuel tank
- Two 12V batteries, rac and cable
- Exhaust system(Ripple flex exhaust pipe, exhaust siphon, flange, muffler)
- User manual

Options

- Battery charge
 - Engine heater
 - Alternator heater
 - PMG
 - Water oil separator
 - Daily fuel tank
 - Remote control panel
 - Automatic transfer switch/ATS
 - Switch box
- Standard: ● Options: ○

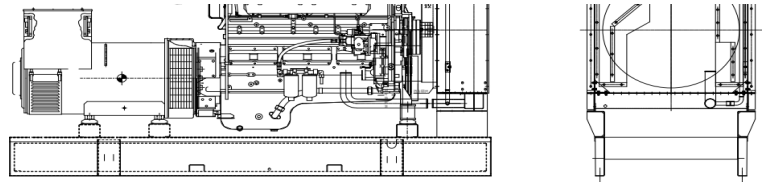
Warranty*

Deutz OEM Engine

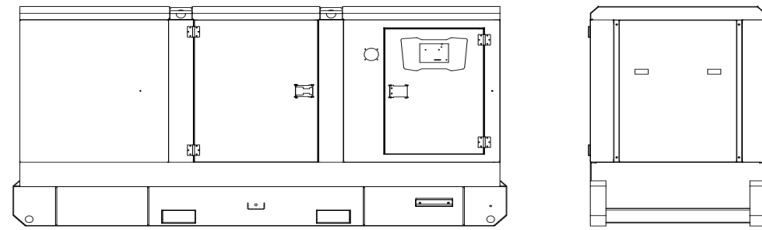
12 months from date of purchase and 1000 hours.

Generator

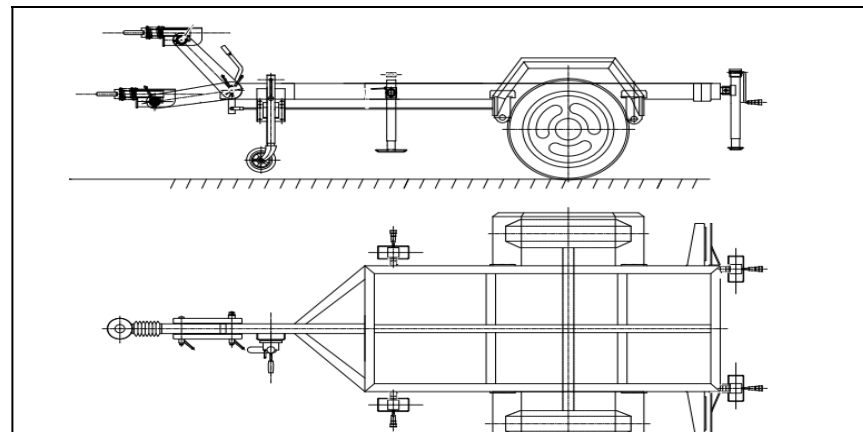
12 months from date of purchase or 1000 hours (whichever occurs first).



Open Type		
L*W*H	mm	2200*900*1450
Weight	kg	1050



Silent Type		
L*W*H	mm	2870*1050*1550
Weight	kg	1400





Trailer Option		
L*W*H	mm	4200*1900*950
Max loading weight	kg	1600