

POWER YOUR FUTURE

Javac Generator LV50

1003TG

Prime Power: 40KW/50KVA

Standby Power: 44KW/55KVA



GENERATING POWER SOLUTIONS

Increased availability for new operations

Reliable, robust and versatile generator.
Ready to deliver power for a next job.

Increased uptime during operations

Once installed on the end-user-site, the generator will be ready to run: "peace of mind" operation.

Reduced transport and installation costs

The compact and robust design with integrated transport features enables faster and safer transport and installation.

Reduced service & maintenance costs

Longer service intervals.
Quicker and more efficient service jobs.

Premium resale value

Designed and built to last.



Technical Data

Model		LV50
Rated prime power	kva	50
Rated standard power	kva	55
Rated voltage line to line	V	400/230
Rated current	A	72,1
Maximum sound level	dB(@7m)	≤68

Engine-LOVOL

Model		1003TG
Air intake system		Turbocharged
Fuel injection system		Direct Inject
No. cylinders		3
Displacement	Liquid	2,99
Bore*Stroke	mm	100*127
Compression ratio		16,5
Rated speed	r/min	1500
Rated net power(with fan)	Kw	44
Governor type		Mechanical
Start Motor	V	12

Exhaust System

Exhaust gas flow	m³/min	/
Exhaust gas temp	°C	/

Alternator

Model	STAMFORD	PI224D
Phase		3
Voltage	V	400/230
Wiring Type		3 Phase 4 wire, Y type
Bearing		1
Power factor		0,8
Frequency	Hz	50
Prime power	KVA	50
Exciter Type		Brushless, self-excitation
Voltage regulation	%	±0.5
Protection Grade		IP 23
Insulation grade		H/H
Altitude	m	≤1000

Controller-DEEPSEA

Model	DSE6120
-------	---------

Protective functions:

- Low oil pressure
- High water temperature
- High/low voltage
- High Engine Temperature and Overspeed.
- Voltage regulator frequency regulator

Max back pressure	kPa	10,2
-------------------	-----	------

Air Intake System

Max intake restriction	kPa	/
Consumption	m ³ /min	/
Air flow	m ³ /min	/

Fuel System

100% load(Prime power)	L/h	6,1
75% load(Prime power)	L/h	4,5
50% load(Prime power)	L/h	3
Fuel tank capacity	L	145

Lubrication System

Total system oil capacity	L	8,1
Oil consumption	g/kwh	≤4
Min oil pressure	kPa	352-448
(continuous operation)		

Cooling System

Total coolant capacity	L	15,9
Thermostat	°C	82-95
Max top tank temperature	°C	112

Standard Features

- Engine Perkins (LV)
- Radiator 50°C max,fans are driven by belt
- 24V charge alternator
- Alternator: single bearing alternator IP23, insulation class H/H
- Standard auto control system
- One set of air filter, fuel filter, oil filter
- Main line circuit breaker/MCCB
- Base fuel tank

- Emergency stop
- Start failure

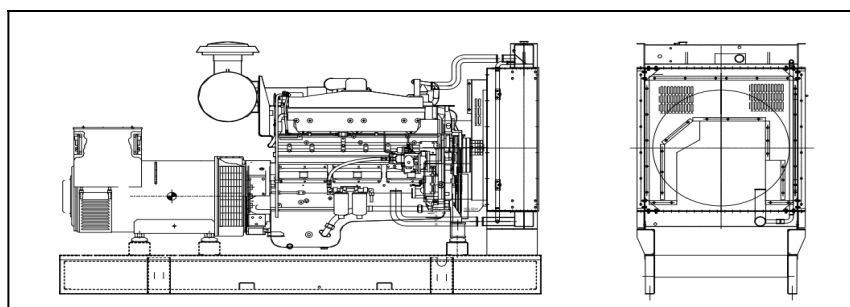


Control Module Options



- Auto generator control module
- Control module with" Three Remote Control" functions
- ATS auto load transfer screen
- Synchronising control modules
- Power output cabinet

Unit Dimensions(Basic unit)



Two 12V batteries, rac and cable ●
 Exhaust system(Ripple flex exhaust pipe, ●
 exhaust siphon, flange, muffler ●
 User manual

Options

Battery charge ○

Engine heater ○

Alternator heater ○

PMG ○

Water oil separator ○

Daily fuel tank ○

Remote control panel ○

Automatic transfer switch/ATS ○

Switch box ○

Standard: ●

Options: ○

Warranty*

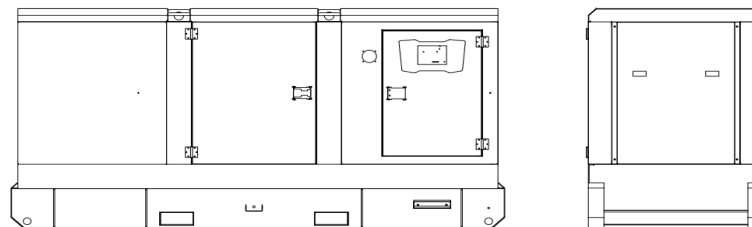
12 months from date of purchase and 1000 hours.

Generator

12 months from date of purchase or 1000 hours
 (whichever occurs first).

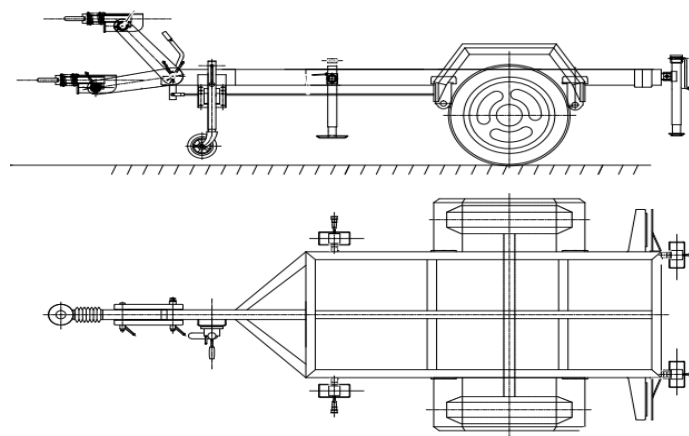
Open Type

L*W*H	mm	1850*950*1200
Weight	kg	802



Silent Type

L*W*H	mm	2480*1000*1400
Weight	kg	1300



Trailer Option

L*W*H	mm	3400*1750*950
Max loading weight	kg	1300

More information, pls refer to our web-site: www.javac.be

Manufacturer reserves the right to make changes in model, technical specification, color, equipment and accessories without notice.