

POWER YOUR FUTURE

6126-68D

WP Generator

Prime Power: 200KVA

WP-200

Standby Power: 220KVA



GENERATING POWER SOLUTIONS

Increased availability for new operations

Reliable, robust and versatile generator.
Ready to deliver power for a next job.

Increased uptime during operations

Once installed on the end-user-site, the generator will be ready to run: "peace of mind" operation.

Reduced transport and installation costs

The compact and robust design with integrated transport features enables faster and safer transport and installation.

Reduced service & maintenance costs

Longer service intervals.
Quicker and more efficient service jobs.

Premium resale value

Designed and built to last.



Nanoweld bvba

Industrial estate "Bosduin"

Kwade Weide 1

BE-2920 Kalmthout

Web: www.javac.be

Technical Data

Model		WP 200
Rated prime power	kva	200
Rated standard power	kva	220
Rated voltage line to line	V	400/230
Rated current	A	289
Maximun sound level	dB(@7m)	≤95

Engine-Deutz OEM

Model		6126-68D
Air intake system		Turbo, Inter-cooled
Fuel injection system		Direct Inject
No. cylinders		6
Displacement	Liquid	9,73
Bore*Stroke	mm	126*130
Compression ratio		17
Rated speed	r/min	1500

Alternator

Model	STAMFORD	UCI274H
Phase		3
Voltage	V	400/230
Wiring Type		3 Phase 4 wire, Y type
Bearing		1
Power factor		0,8
Frequency	Hz	50
Prime power	KVA	200
Exciter Type		Brushless, self-excitation
Voltage regulation	%	±0.5
Protection Grade		IP 23
Insulation grade		H/H
Altitude	m	≤1000

Controller-DEEPSEA

Rated net power(with fan)	Kw	187
Governor type		Mechanical
Start Motor	V	24

Exhaust System

Exhaust gas flow	m³/min	/
Exhaust gas temp	°C	/
Max back pressure	kPa	10

Air Intake System

Max intake restriction	kPa	/
Consumption	m³/min	/
Air flow	m³/min	/

Fuel System

100% load(Prime power)	L/h	18
75% load(Prime power)	L/h	14
50% load(Prime power)	L/h	11
Fuel tank capacity	L	350

Lubrication System

Total system oil capacity	L	28
Oil consumption	g/kwh	≤4
Min oil pressure	MPa	0.35-0.55
(continuous operation)		

Cooling System

Total coolant capacity	L	48
Thermostat	°C	85-92
Max top tank temperature	°C	104

Model

DSE6120

Protective functions:

- Low oil pressure
- High water temperature
- High/low voltage
- High Engine Temperature and Overspeed.
- Voltage regulator frequency regulator
- Emergency stop
- Start failure



Control Module Options



- Auto generator control module
- Control module with "Three Remote Control" functions
- ATS auto load transfer screen
- Synchronising control modules
- Power output cabinet

Standard Features

- Engine Deutz OEM
- Radiator 50°C max, fans are driven by belt
- 24V charge alternator
- Alternator: single bearing alternator IP23, insulation class H/H
- Standard auto control system
- One set of air filter, fuel filter, oil filter
- Main line circuit breaker/MCCB
- Base fuel tank
- Two 12V batteries, rac and cable
- Exhaust system(Ripple flex exhaust pipe, exhaust siphon, flange, muffler)
- User manual

Options

- Battery charge
- Engine heater
- Alternator heater
- PMG
- Water oil separator
- Daily fuel tank
- Remote control panel
- Automatic transfer switch/ATS
- Switch box

Standard: ●

Options: ○

Warranty*

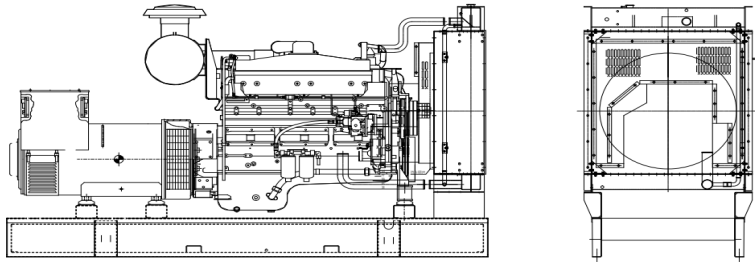
ENGINE

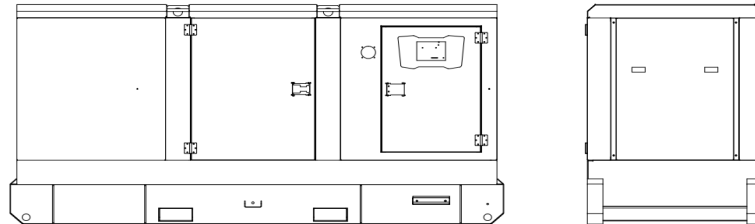
12 months from date of purchase and 1000 hours.

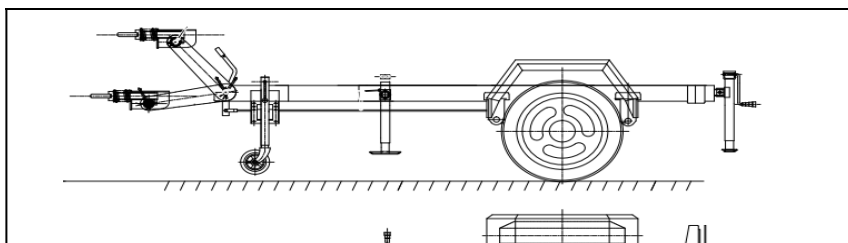
Alternator

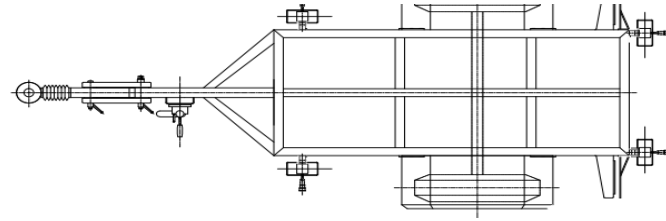
12 months from date of purchase or 1000 hours
(whichever occurs first).

Unit Dimensions(Basic unit)

	
Open Type	
L*W*H	mm
Weight	kg
	2850*1020*1600
	2100

	
Silent Type	
L*W*H	mm
Weight	kg
	3450*1150*1650
	2600





Trailer Option

L*W*H	mm	4900*2100*950
Max loading weight	kg	3300