

POWER YOUR FUTURE

Lovol Generator LG120

Prime Power: 120KW/150KVA

Standby Power: 132KW/165KVA



GENERATING POWER SOLUTIONS

Increased availability for new operations

Reliable, robust and versatile generator.
Ready to deliver power for a next job.

Increased uptime during operations

Once installed on the end-user-site, the generator will be ready to run: "peace of mind" operation.

Reduced transport and installation costs

The compact and robust design with integrated transport features enables faster and safer transport and installation.

Reduced service & maintenance costs

Longer service intervals.
Quicker and more efficient service jobs.

Premium resale value

Designed and built to last.



 **SAFETY**

- Operate safely in accordance with proper operation manual.
- To prevent trouble and accidents, perform daily and preventive maintenance checks without fail.

Technical Data

Model LG120		
Rated prime power	kva	150
Rated standard power	kva	165
Rated voltage line to line	V	400/230
Rated current	A	216,5
Maximun sound level	dB(@7m)	≤90

Engine-LOVOL

Model	LR6M3L-15	
Air intake system	Turbocharged	
Fuel injection system	Direct Inject	
No. cylinders	6	
Displacement	Liquid	7,13
Bore*Stroke	mm	110*125
Compression ratio	17:01	
Rated speed	r/min	1500
Rated net power(with fan)	Kw	130
Governor type	Electrical	
Start Motor	V	12

Alternator

Model	Javac	LGG74F
	STAMFORD	UCI274F
Phase	3	
Voltage	V	400/230
Wiring Type	3 Phase 4 wire, Y type	
Bearing	1	
Power factor	0,8	
Frequency	Hz	50
Prime power	KVA	150
Exciter Type	Brushless, self-excitation	
Voltage regulation	%	±0.5
Protection Grade	IP 23	
Insulation grade	H/H	
Altitude	m	≤1000

Controller-DEEPSEA

Model	DSE6120
Protective functions:	
■ Low oil pressure	

Exhaust System

Exhaust gas flow	m ³ /min	/
Exhaust gas temp	°C	/
Max back pressure	kPa	10,2

Air Intake System

Max intake restriction	kPa	/
Consumption	m ³ /min	/
Air flow	m ³ /min	/

Fuel System

100% load(Prime power)	L/h	21,3
75% load(Prime power)	L/h	15,7
50% load(Prime power)	L/h	12
Fuel tank capacity	L	350

Lubrication System

Total system oil capacity	L	16,1
Oil consumption	g/kwh	≤4
Min oil pressure	kPa	352-448
(continuous operation)		

Cooling System

Total coolant capacity	L	29,5
Thermostat	°C	82-95
Max top tank temperature	°C	112

Standard Features

Engine perkins lovlo

- High water temperature
- High/low voltage
- High Engine Temperature and Overspeed.
- Voltage regulator frequency regulator
- Emergency stop
- Start failure



Control Module Options



- Auto generator control module
- Control module with "Three Remote Control" functions
- ATS auto load transfer screen
- Synchronising control modules
- Power output cabinet

Unit Dimensions(Basic unit)

- Radiator 50°C max,fans are driven by belt
- 24V charge alternator
- Alternator: single bearing alternator IP23,
- insulation class H/H
- Standard auto control system
- One set of air filter, fuel filter, oil filter
- Main line circuit breaker/MCCB
- Base fuel tank
- Two 12V batteries, rac and cable
- Exhaust system(Ripple flex exhaust pipe,
- exhaust siphon, flange, muffler
- User manual

Options

- Battery charge
- Engine heater
- Alternator heater
- PMG
- Water oil separator
- Daily fuel tank
- Remote control panel
- Automatic transfer switch/ATS
- Switch box
- Standard: ● Options:○

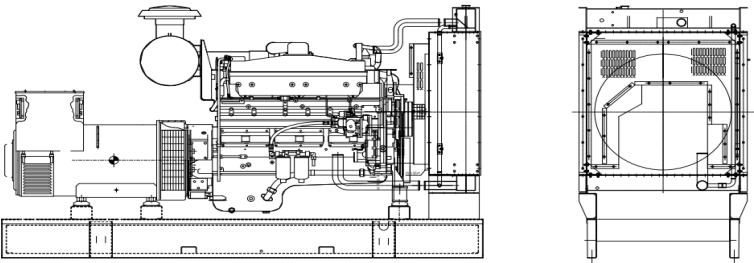
Warranty*

Perkins Lovol Engine

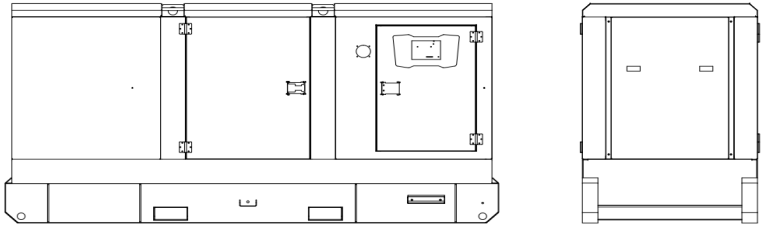
12 months from date of purchase and 1000 hours.

Generator

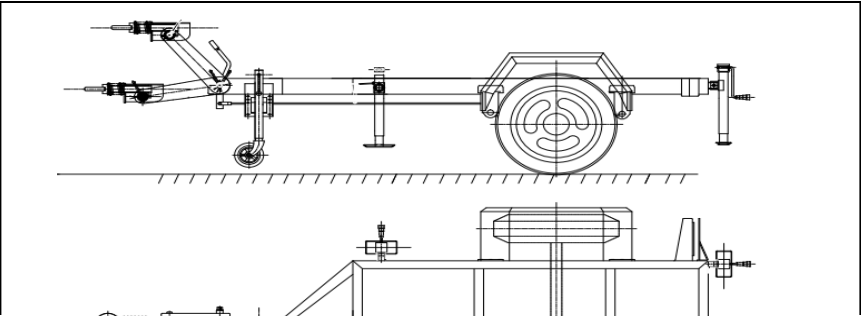
12 months from date of purchase or 1000 hours
(whichever occurs first).

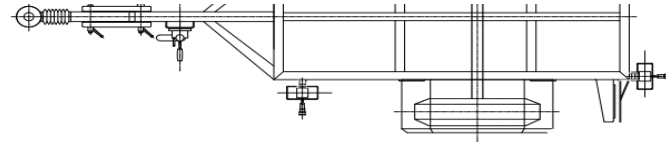


Open Type		
L*W*H	mm	2013*980*1350
Weight	kg	1043



Silent Type		
L*W*H	mm	3280*1130*1750
Weight	kg	2300





Trailer Option

L*W*H	mm	4500*2000*950
Max loading weight	kg	2200