

POWER YOUR FUTURE

**Perkins Generator
JV120P**

1106A-70TAG2

Prime Power: 120KW/150KVA

Standby Power: 132KW/165KVA



GENERATING POWER SOLUTIONS

Increased availability for new operations

Reliable, robust and versatile generator.
Ready to deliver power for a next job.

Increased uptime during operations

Once installed on the end-user-site, the generator will be ready to run: "peace of mind" operation.

Reduced transport and installation costs

The compact and robust design with integrated transport features enables faster and safer transport and installation.

Reduced service & maintenance costs

Longer service intervals.
Quicker and more efficient service jobs.

Premium resale value

Designed and built to last.



SAFETY

- Operate safely in accordance with proper operation manual.
- To prevent trouble and accidents, perform daily and preventive maintenance checks without fail.

Perkins Series

8KVA--2050KVA

Technical Data

Model		JV120P
Rated prime power	kva	150
Rated standard power	kva	165
Rated voltage line to line	V	400/230
Rated current	A	217
Maximun sound level	dB(@7m)	≤71

Engine-PERKINS

Model		1106A-77TAG2
Air intake system		Turbo, Air/Air Cooling
Fuel injection system		Direct Injection
No. cylinders		6
Displacement	Liquid	7,01
Bore*Stroke	mm	105*135
Compression ratio		16
Rated speed	r/min	1500
Rated net power(with fan)	Kw	130
Governor type		Mechanical
Start Motor	V	12

Alternator

Model	LEROY SOMER TAL	TAL-A44-J
Phase		3
Voltage	V	400/230
Wiring Type		3 Phase 4 wire, Y type
Bearing		1
Power factor		0,8
Frequency	Hz	50
Prime power	KVA	150
Exciter Type		Brushless, self-excitation
Voltage regulation	%	±0.5
Protection Grade		IP 23
Insulation grade		H/H
Altitude	m	≤1000

Controller-DEEPSEA

Model	DSE6120
Protective functions:	
<ul style="list-style-type: none"> ■ Low oil pressure 	

Exhaust System

Exhaust gas flow	m ³ /min	23,78
Exhaust gas temp	°C	484
Max back pressure	kPa	6

Air Intake System

Max intake restriction	kPa	3
Consumption	m ³ /min	10,2
Air flow	m ³ /min	282

Fuel System

100% load(Prime power)	L/h	32,5
75% load(Prime power)	L/h	24
50% load(Prime power)	L/h	16,3
Fuel tank capacity	L	350

Lubrication System

Total system oil capacity	L	16,5
Oil consumption	g/kwh	≤4
Min oil pressure	kPa	340-430

(continuous operation)

Cooling System

Total coolant capacity	L	21
Thermostat	°C	82-93
Max top tank temperature	°C	118

Standard Features

- Engine(Perkins) ●
- Radiator 50°C max,fans are driven by belt ●

- High water temperature
- High/low voltage
- High Engine Temperature and Overspeed.
- Voltage regulator frequency regulator
- Emergency stop
- Start failure

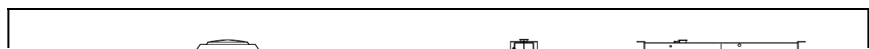


Control Module Options

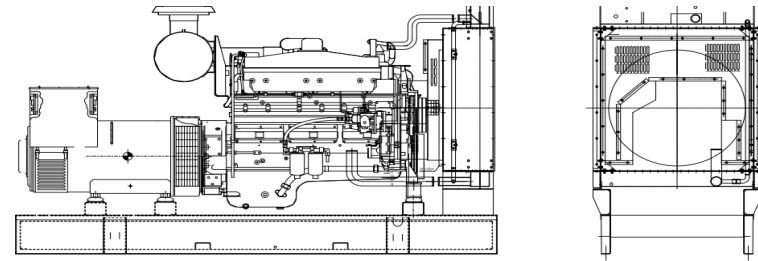


- Auto generator control module
- Control module with " Three Remote Control" functions
- ATS auto load transfer screen
- Synchronising control modules
- Power output cabinet

Unit Dimensions(Basic unit)



- 24V charge alternator
- Alternator: single bearing alternator IP23, insulation class H/H
- Standard auto control system
- One set of air filter, fuel filter, oil filter
- Main line circuit breaker/MCCB
- Base fuel tank
- Two 12V batteries, rac and cable
- Exhaust system(Ripple flex exhaust pipe, exhaust siphon, flange, muffler)
- User manual

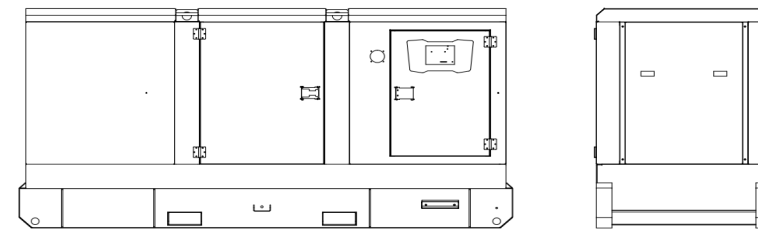


Open Type		
L*W*H	mm	2240*960*1315
Weight	kg	1300

Options

- Battery charge
- Engine heater
- Alternator heater
- PMG
- Water oil separator
- Daily fuel tank
- Remote control panel
- Automatic transfer switch/ATS
- Switch box

Options: ○



Silent Type		
L*W*H	mm	3120*1130*1750
Weight	kg	2400

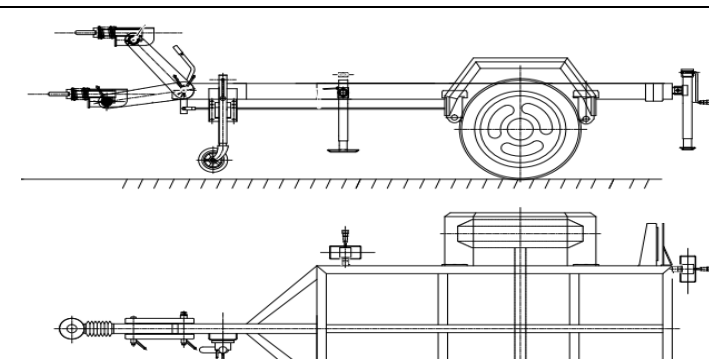
Warranty*

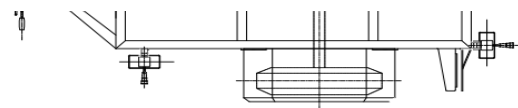
Perkins Engine

12 months from date of purchase and 1000 hours.

Generator

12 months from date of purchase or 1000 hours (whichever occurs first).





Trailer Option		
L*W*H	mm	4500*2000*950
Max loading weight	kg	2200